



# GOULBURN EAST PUBLIC SCHOOL NEWSLETTER

Ph: 02 4821 4007

Email: [goulburne-p.school@det.nsw.edu.au](mailto:goulburne-p.school@det.nsw.edu.au)



**Respect**

Term 4

**Responsibility**

3 November 2022

**Resilience**

Week 4

## TERM 4 DATES

**Monday 24 October to  
Friday 4 November**

School Swimming Scheme

**Kindergarten 2023  
Orientation**

Wednesday 9 November

Wednesday 16 November

**Friday 11 November**

Teddy Bears Picnic

**Friday 18 November**

K-2 Excursion to GPAC  
'Edward the Emu'

**Wednesday 14 December**

Presentation Day

**Friday 16 December**

Student's last day for 2022

## Goulburn East Outreach Playgroup

Playgroup is held in the  
Goulburn East Hall during the  
school terms from 9.30am to  
11.00am.

### Term 4 Dates

Tuesdays, alternate weeks

15 November

29 November

13 December

Please phone the Goulburn  
Regional Art Gallery for further  
information on 4823 4494.

Congratulations to our swimmers who are about to complete the fortnight of the intensive School Swimming Scheme. Their positive attitude and approach to these sessions have been excellent. Thank you to Mrs Sharwood, Mrs Martin and Mrs Hall for supporting this incredibly worthwhile program. The new indoor facility is a marvellous venue for these lessons. Hopefully we will all have a wonderful summer ahead of swimming, whether indoors or outdoors.

Hard to believe that the Goulburn Performing Arts Centre (GPAC) has only been open since March of this year! It has provided schools and families with access to a wonderful range of shows including *The Alphabet of Awesome Science* and *Barbaroi Circus* earlier in the year. Our final visit to GPAC for this year will be K-2 seeing *Edward the Emu* on Friday 18 November.

Our Presentation Ceremonies will be held on Wednesday 14 December at school. Yrs 3-6 ceremony will be held from 10.00am - 11.30am and K-2 from 12.30pm - 1.30pm. Further details regarding end-of-year events will be coming home with the next newsletter.

Finally, last Friday was World Teacher's Day. I am very proud and indeed fortunate to work alongside and lead an outstanding team of teachers here at Goulburn East. They do not rest on their laurels for a moment but are always striving to be the best they can be for our students, your children.

*Thank you for the difference you make every day!!!*

*Mrs Robinson, Ms Charnley, Mrs Martin, Mrs Sharwood, Mr Manning, Mrs Pattison, Mrs Anderson, Mrs Jones, Mr Rebhandl, Mr McQuillan and Mr Taylor!!*

Mrs Cribb



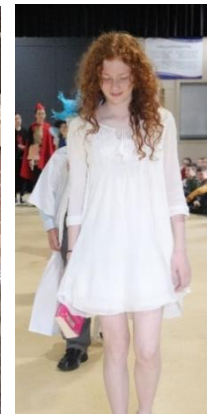
**LOWES** are holding a school wear sale on Thursday 17 November and Friday 18 November.

**ZERO 20% OFF UNIFORM SALE**

Customers Must have a LOWES ZERO/Reward Card for discount

# Book Character Parade



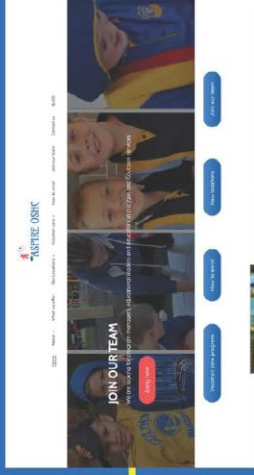


# HOW TO ENROL

This is your guide on how to enrol in ASPIRE OSHC before school care, after school care and vacation care programs using Kidsoft. Kidsoft is completely free to sign up and use.

## STEP ONE

GO TO ASPIRE'S WEBSITE  
[www.aspire-oshc.com.au](http://www.aspire-oshc.com.au)



## STEP TWO

GO TO OUR LOCATIONS AND  
CLICK ON YOUR SCHOOL



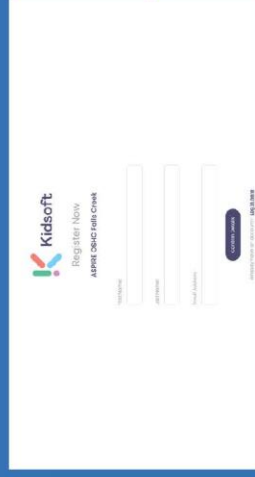
## STEP THREE

CLICK THE BOOK NOW  
BUTTON.



## STEP FOUR

CREATE A KIDSOFT ACCOUNT.  
YOU ARE NOW ALL SET UP TO  
USE OUR SERVICE.



GOULBURN SOUTH PUBLIC SCHOOL



## SESSION TIMES

Monday to Friday

### Before School Care

7:00am to 9:00am

### After School Care

3:00pm to 6:00pm

ASPIRE OSHC providing high quality care and education to school aged children from Goulburn South Public School. We aim to provide a fun and creative age appropriate program based on the "My Time, Our Place" National Framework for school aged children.

ASPIRE OSHC provide Before and After school care programs and Vacation Care. These programs develop and nurture children's minds.

ASPIRE OSHC promotes a healthy lifestyle through various activities for children to discover, learn and play. We create healthy habits by providing nutritional foods and a variety of opportunities to participate in active play.

## PICK UP AND DROP OFF

Goulburn South Public School (host) will transport to and from:

- Goulburn East Public School
- Goulburn North Public School
- Goulburn Public School
- St Joseph's Primary School Goulburn North

## CONTACT DETAILS

To enrol and make a booking please visit our website [aspire-oshc.com.au](http://aspire-oshc.com.au)

Have a question? or request a parent handbook, please contact our Program Manager **Jessie**.

 [goulburnmps@aspire-oshc.com.au](mailto:goulburnmps@aspire-oshc.com.au)

 0456 814 711



Scan to book  
your spot

