



GOULBURN EAST PUBLIC SCHOOL NEWSLETTER



Ph: 02 4821 4007

Email: goulburne-p.school@det.nsw.edu.au

Respect

Responsibility

Resilience

Term 4

7 November 2024

Week 4

TERM 4 DATES

Tuesday 12 November

Yrs 1-2 Raiders League
Tag Gala Day at North Park

Wednesday 13 November

The Rocks excursion
Sydney for stage 2

Wednesday 13 to Friday 15 November

Stage 3 Camp

Friday 22 November

Colour Run

Friday 6 December

Mini-Fete

Wednesday 11 December

Presentation Night @ the
Goulburn Workers Club

Wednesday 18 December

Last day for students

Hamilton HUME and William HOVELL

Our two sporting houses, Hume and Hovell, are named after two famous Australian explorers. This year is the 200th anniversary of Hamilton Hume & William Hovell making their journey of exploration to find an overland route to Bass Strait. They travelled past Goulburn in early October 1824. There were only a few houses, an inn and a few farms around the Goulburn area back then.

Hovell settled in Goulburn after the trip and is buried in St Saviour's cemetery behind the jail. Hume had a property near Gunning & another near Yass. He is buried in Yass Cemetery.

As part of the commemoration ceremonies, four student leaders attended the unveiling of the new signpost to Hovell's grave.



Kindergarten 2025 Orientation Dates

Wednesday 13 November

Wednesday 20 November



Principal's Message

Today is School Counsellor Recognition Day. This year's theme, "Little Moments, Lasting Change," captures the essence of the invaluable work our counsellors do every day. They provide those moments of listening, understanding, and connecting to support students, families and staff to notice their needs and strengths.

I would like to say a very big thank you to our current school counsellor here at East. We are so lucky to have Mrs Jenny Davis who works so hard to support our staff and students throughout the year. I would love to have her every day but unfortunately, I have to share her with two other schools!

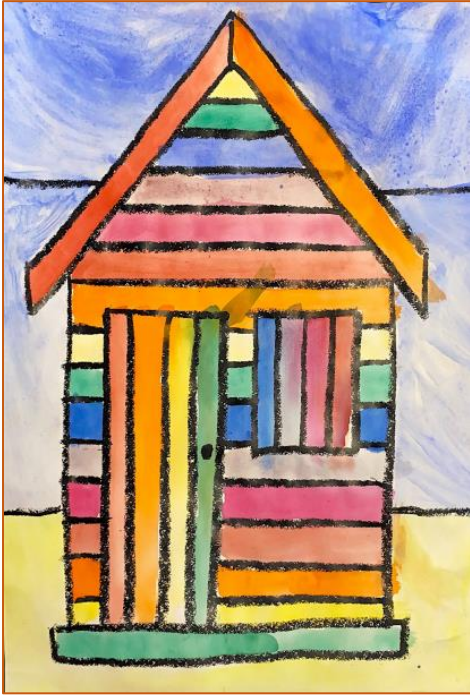
At the end of this year, our wonderful Mrs Sharwood will formally retire from many years of teaching and leading in public schools. Helen has been on leave this year pending her decision, having been Assistant Principal here since 2015. I don't have the right words to say just how much we are going to miss her but there are adventures ahead for her!! The position will be filled through the merit selection process which will begin shortly.

Charmian Cribb



1/2L Boatshed Artwork

Earlier this term, 1/2L enjoyed using water colours to create these vibrant boatshed artworks. Students were allowed to colour their boatsheds however they wished with many opting for fabulous patterns and rainbows. Prior to painting, we explored many different boatsheds that can be found along the Australian coastlines and discussed how these may have changed over time. Well done 1/2L, they look fabulous! Mrs Meindl



Years 1 and 2 Maths Scavenger Hunt

1/2L and 1/2M took their learning outside to participate in a 'time' scavenger hunt. The students collaborated to find hidden clocks and clues, ultimately cracking the code to uncover the secret message. It was wonderful to see students from both classes working together and supporting each other. Well done, 1/2LM!

Mr Manning & Mrs Meindl



Healthy Harold

KP had lots of fun with Healthy Harold learning how to be a good friend.



Musica Viva



Science Experiments!

1/2M and 1/2L have been learning about changes in the weather. Both classes have been investigating different types of clouds - what they look like and how they affect us. We went outside to see them and made observations and predictions about what types of clouds they were. We then did an experiment that demonstrated how rain forms and falls from clouds. The kids had a great time making their rain clouds using a container of water, shaving foam and blue food dye! Mr Manning



Wombat Stew in the library

During library this week, the K-2 students have enjoyed listening to Mrs Anderson read *Wombat Stew*, a tale about a wombat being saved from becoming a dingo's lunch. A campsite has been set up in the corner with a large pot hanging over some flames.

Students have been placing gooey mud, chewy feathers, crunchy flies, munchy slugs and bugs, and some spicy gumnuts into the pot while dancing and singing "Wombat Stew, Wombat Stew, Crunchy, Munch, for my lunchy, Wombat Stew"!

The students have all loved this story while learning about rhyming words and Australian animals with Mrs Anderson. Mrs Robinson



Containers Wanted

If you need to get rid of these containers, we will take them.

We are looking to make a succulent garden and need to collect lots of 2 litre blue ribbon and 125mm black pot containers. If you can help please give them to Mrs Pattison.

Thank you



TERM 4 WEEK 4 AWARD RECIPIENTS

KP	Hastings Downes	1/2L	Evie Croker	1/2M	Lillian Ryan
	Michael Shoard		Harlow Seddon		Samir Musinov
	Zaylee Jones		Levi Ash		Harrison Dale
	Ava McCann		Jackson Kiss		Matthew Vine
3J	Mikaela Rooks	4/5T	Poppy Edmonds	6M	Lucy Taylor
	Kye Finnie		Samridhi Amatya		Lexie Price
	Lucas Wilson		Ethan Wilson		Reuben Hargood
	Maksim Zecevic		Molly Mammone		Cael Nowak
Mrs Robinson		Mrs Anderson		Mrs Charnley	
Jack Garner		Jacob Robinson		Brooklyn Marley	
Billy Shawyer		Nicholas Williams		Ellie Chamberlain	
Noah Vuniquai		Mrs Dent		Kye Finnie	
Zoey Fitzgibbon		Ava Polzin		Armani Gray	



Time saving tips for lunchboxes

The before school rush can have us reaching for sometimes foods.

With a little extra planning you can make it easier to grab an everyday option.

Try:

- Cutting up extra vegetables at dinner ready to pack in the morning
- Cutting up reduced fat cheese cubes in bulk on the weekend ready to pack with some crackers for the week
- Swapping from packaged chips to packaged air popped popcorn

Use our handy lunchbox planner to plan out everyday lunchboxes for the week.



GOULBURN EAST P & C PRESENTS

THE BIG CHRISTMAS

RAFFLE TICKET

ADMIT ONE ONLY	DEC 2 2024 DRAWN AT 5PM	TICKET AT JUST \$2
----------------	----------------------------	--------------------

OVER \$1500 WORTH OF PRIZES TO BE WON!

TICKETS TO BE PURCHASED ONLINE:
rafflelink.com.au/goulburneastxmas

Scan me

Raffle will commence on 1 November and finish 1 December, with the raffle to be drawn on 2 December at 5pm. All raffle tickets are to be purchased online via the QR code or via the website: <https://rafflelink.com.au/goulburneastxmas>.

Prizes to be WON include:

- Kids ride on Kabota Tractor
- 2 Course meal & wine at Lerida estate Winery
- Gifts Hampers
- \$150, \$100, \$50 Gift Cards
- Physio Voucher
- Dinner vouchers to Diggers in the Park

And many more but you've got to be in it to WIN it!

UNIFORM STALL

20 NOVEMBER 2024

GEPs P & C WIL BE HOLDING A STALL BETWEEN 12.30-1.30PM
 GOLD COIN DONTATION. WE ALSO ACCEPT SCHOOL CLOTHING DONATIONS

GOLD COIN

SIZES 4-14

ENROLMENTS FOR KINDERGARTEN 2025

Kindergarten enrolments are now being taken for children who live in the Goulburn East zone and will turn 5 years old before 31 July 2025.

Enrolments can be done **online** through the school website at the following link:

<https://goulburne-p.schools.nsw.gov.au/> Click on the 'Enrolment' tab to get started.

Please note that original documents will need to be sighted at the office, and 100 points of proof of address documents must be provided in accordance with the Residential Address Checklist which is available from the school office.



To finalise your child's enrolment, you will need to bring along:

- Your child's birth certificate
- Your child's immunization certificate (available from Medicare)
- Proof of address documents

NEW BUS NUMBERS OCTOBER 2024

CURRENT	NEW	ROUTE NAME
BUS 8 (N0450)	S813	COLLECTOR TO GOULBURN SCHOOLS
BUS 3 (N1699)	S810	TOWRANG TO GOULBURN SCHOOLS
BUS 1	S819	RUN O WATERS TO GOULBURN SCHOOLS
BUS 17	S821	GOULBURN SCHOOLS VIA KENMORE
BUS 10	S828	GOULBURN EAST VIA GOULBURN SCHOOLS
BUS 19	S822	MARSDEN WEIR VIA CLYDE STREET TO GOULBURN SCHOOL
BUS 6	S824	BRADFORDVILLE VIA GOULBURN SCHOOLS
BUS 2	S820	CRESTWOOD VIA GOULBURN SCHOOLS
BUS 18	S823	SOUTH GOULBURN VIA GOULBURN SCHOOL
BUS 4 (N1131)	S817	TALLONG TO GOULBURN SCHOOLS
BUS 5 (N1021)	S816	MARULAN SOUTH TO GOULBURN SCHOOLS
BUS 7 (N1012)	S815	CARRICK VIA GOULBURN SCHOOL
BUS 9 (N0477)	S814	BIG HILL VIA GREENWICH PARK TO MARULAN PUBLIC SCHOOL
BUS 11 (N0166)	S812	MIDDLE ARM VIA GOULBURN SCHOOLS
BUS 14 (N2363)	S811	TARLO TO GOULBURN SCHOOLS
BUS 15 (N1138)	S833	TARAGA TO GOULBURN SCHOOLS
BUS 20 (N0757)	S834	GRABBENGULLEN TO GOULBURN SCHOOLS
TOWN SERVICE	821A	GOULBURN TO KENMORE VIA GIBSON STREET VIA HOSPITAL
	821B	GOULBURN TO KENMORE VIA GIBSON STREET VIA HOSPITAL
	823	GOULBURN WEST (LOOP SERVICE)
	825	GOULBURN EAST (LOOP SERVICE)
CROOKWELL	818	CROOKWELL TO GOULBURN

GOULBURN COMMUNITY CONNECT DAY

DATE: 20 November Time: 10am - 2.30pm

Location: Goulburn Soldiers Club



Join us at Goulburn Community Connect Day, a one-stop event designed to empower and support you in your journey towards success! This event brings together essential resources and services to assist you in your personal and professional growth

Some of the support that can assist you

- Identification - birth certificate photo ID
- Apprenticeships
- First Nations supports
- Employment Programs
- Youth Programs
- Employment opportunities
- Training and education
- NILS Loan Scheme - interest free loans

- Work and Development Orders and Fines
- Mental health support
- Working with Children's Checks
- Legal support information
- Employment opportunities
- Centrelink payments
- Obtaining a Driver's Licence through Driver Licencing Access Program

Goulburn Community Connect Day has been made possible with the assistance of the Local Jobs Program Capital Region Local Initiatives Fund

Workforce Australia

Local Jobs

Capital Region



To secure a table and more information: annemaree.clarke@capjobs.com.au Ph: 0488 960 175

GOULBURN EAST PUBLIC SCHOOL 2025

Girls All Seasons Uniform

POLO:	S/S ROYAL-RED PANELS WITH EMBROIDERY	from	\$43.95
CULLOTES:	NAVY	from	\$29.95
PANTS:	NAVY BLUE BOOTLEG		\$29.95
JACKET:	ROYAL DRY & COSY JACKET WITH EMBROIDERY		\$72.95
JACKET:	1/2 ZIP POLAR FLEECE WITH EMBROIDERY		\$44.95
SOCKS:	WHITE ANKLE STYLE		\$6.95
HAT:	ROYAL BUCKET STYLE WITH EMBROIDERY		\$21.95

Boys All Seasons Uniform

POLO:	S/S ROYAL-RED PANELS WITH EMBROIDERY	from	\$43.95
SHORTS:	GREY BLOCKERS	from	\$30.95
SHORTS:	GRY CARGO STYLE	from	\$26.95
TROUSERS:	GREY CARGO STYLE	from	\$36.95
TROUSERS:	GREY BLOCKER LONGS	from	\$37.95
JACKET:	ROYAL DRY & COSY JACKET WITH EMBROIDERY		\$72.95
JACKET:	1/2 ZIP POLAR FLEECE WITH EMBROIDERY		\$44.95
SOCKS:	GREY ANKLE STYLE		\$6.95
HAT:	ROYAL BUCKET STYLE WITH EMBROIDERY		\$21.95

Sports Uniform

POLO:	S/S RED/ROYAL PANELS WITH EMBROIDERY	from	\$43.95
SHORTS:	ROYAL KNIT SHORTS	from	\$32.95
SKORT:	ROYAL		\$36.95
JACKET:	1/2 ZIP POLAR FLEECE WITH EMBROIDERY		\$44.95
TRACKPANTS:	ROYAL FLEECE	from	\$36.95
TRACKPANTS:	ROYAL BBT MICROFIBRE	from	\$36.95
SOCKS:	WHITE ANKLE STYLE		\$6.95
HAT:	ROYAL BUCKET STYLE WITH EMBROIDERY		\$21.95

PRICES SUBJECT TO CHANGE

Goulburn
Autumn Street, Goulburn, 406 2580
(02) 45235772



SHOP IN STORE OR ONLINE
www.lowes.com.au/schools-online

SCAN THIS QR CODE FROM YOUR
MOBILE PHONE CAMERA TO GO TO WEBSITE



LOWES will pay a commission to the school on every item of school uniform sold in our local store.

zero WITH YOUR LOWES ZERO CARD YOU WILL RECEIVE 5% DISCOUNT ON EVERY PURCHASE. RECEIVE 5% IN REWARD POINTS TO REDEEM, PLUS GREAT FEATURES AND BENEFITS. For more information please contact Env-Wave on 1300 156 937 or enrol@lowes.com.au

LOWES is having a sale!!!

Thursday 14 to Saturday 16 November 20% of storewide.

Friday 6th December
MINI FETE

12-2 pm

ESCAPE ROOMS

Cafe

Ultimate Tag

Haunted House

FACE PAINTING

MARIO

SOCK WRESTLING

KART

Laser Tag

Fortune Telling

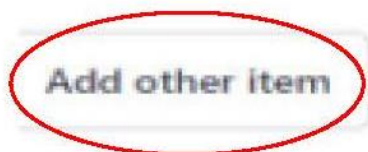
Tickets should be pre-ordered on School Bytes

5 tickets for \$5
10 tickets for \$10
20 tickets for \$15
30 tickets for \$20

Tickets will be handed out on the morning of the mini-fete.
Additional tickets may also be available on the day.
This event is for students only.

To order Mini Fete tickets on School Bytes, select how many tickets you would like to purchase for each child, then submit the order form.

To pay, go to either the 'Statement of Account' or 'Payments' tab on the School Bytes Parent Portal or App.



Click 'Add other item', select which student you are purchasing for, then select 'Mini Fete tickets'

Click on 'Add Items'

Add other item(s)

Please select a student then select the item(s) you wish to add to your statement of account by ticking the appropriate checkboxes.

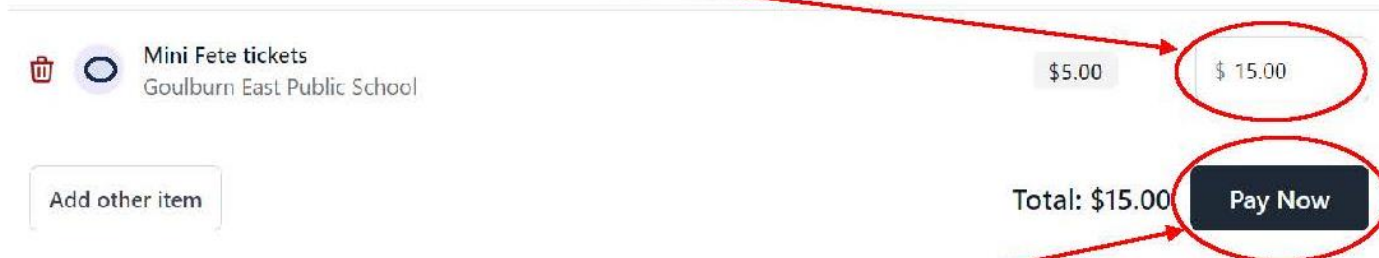
The amount can be changed once the item has been added to your statement.

Student: **Joe Smith**

Items available:

- Mini Fete tickets - Goulburn East Public School - \$5.00
- Uniforms (155454) - Sunglasses - Goulburn East Public School - \$12.00

Enter the amount you are paying. The default amount is \$5.00, but the system will allow you enter another amount depending on how many tickets you are purchasing for your child.



Select the 'Pay Now' button.